



Cosa c'è dietro il bollettino valanghe? Regioni a confronto

Eloïse Bovet
Fondazione Montagna sicura – Valle d'Aosta

Webinar, 23 novembre 2021





Piattaforma di visualizzazione di dati ambientali per l'attività Outdoor in Valle d'Aosta

Enti coinvolti nel progetto



FLESSIBILITA'

Progetti coinvolti



Promotori della piattaforma



WP 8 del progetto **SKIALP@GSB** - Programma di Cooperazione Transfrontaliera INTERREG ITALIA - SVIZZERA 14/20

WP 3 del progetto **"RISK-ACT"** del Piano Integrato Tematico (PITEM) "RISK - Programma di Cooperazione Transfrontaliera ITALIA/FRANCIA "ALCOTRA" 2014/20 (FESR)

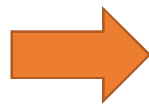


Sviluppo informatico:
ECOMETER

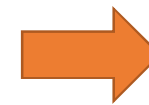
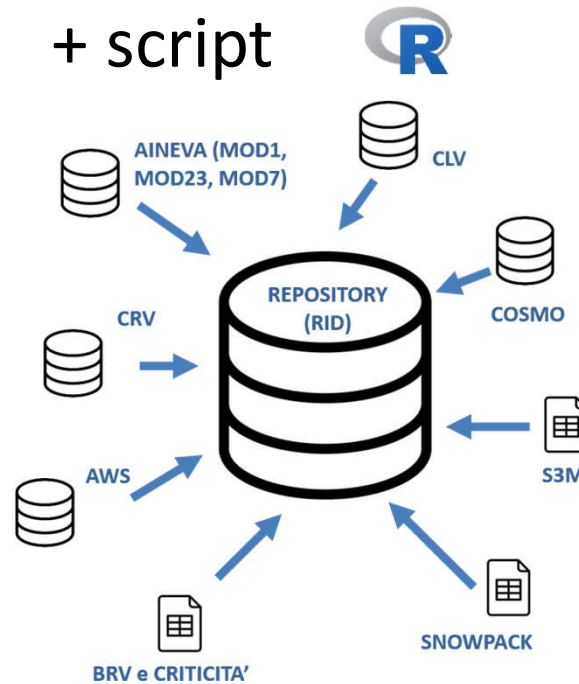
Perché un webgis?



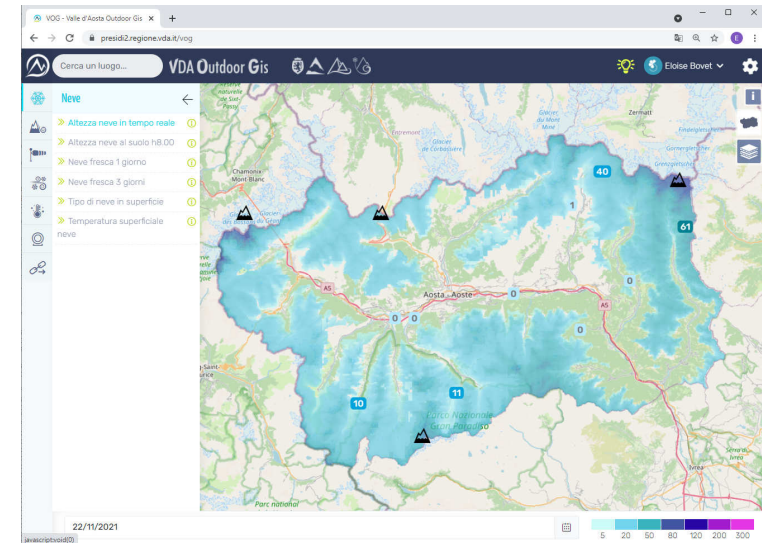
Tanti dati sparsi



RID
dati organizzati
+ script



dati consultabili
dal grande
pubblico



Sito internet e cellulare



Piattaforma dedicata al **grande pubblico**



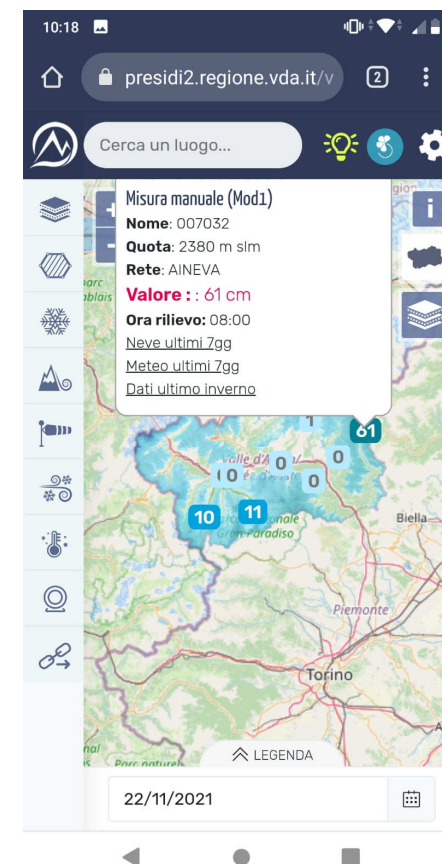
RESPONSIVE:

Consultabile da PC e da cellulare

Profili:

- Semplificato
- Avanzato
- In futuro: accesso riservato previsori, sindaci...

<https://presidi2.regione.vda.it/vog>



Menu



NEVE



EVENTI VALANGHIVI



VENTO



TRASPORTO EOLICO



TEMPERATURA



PANOMAX



LINK

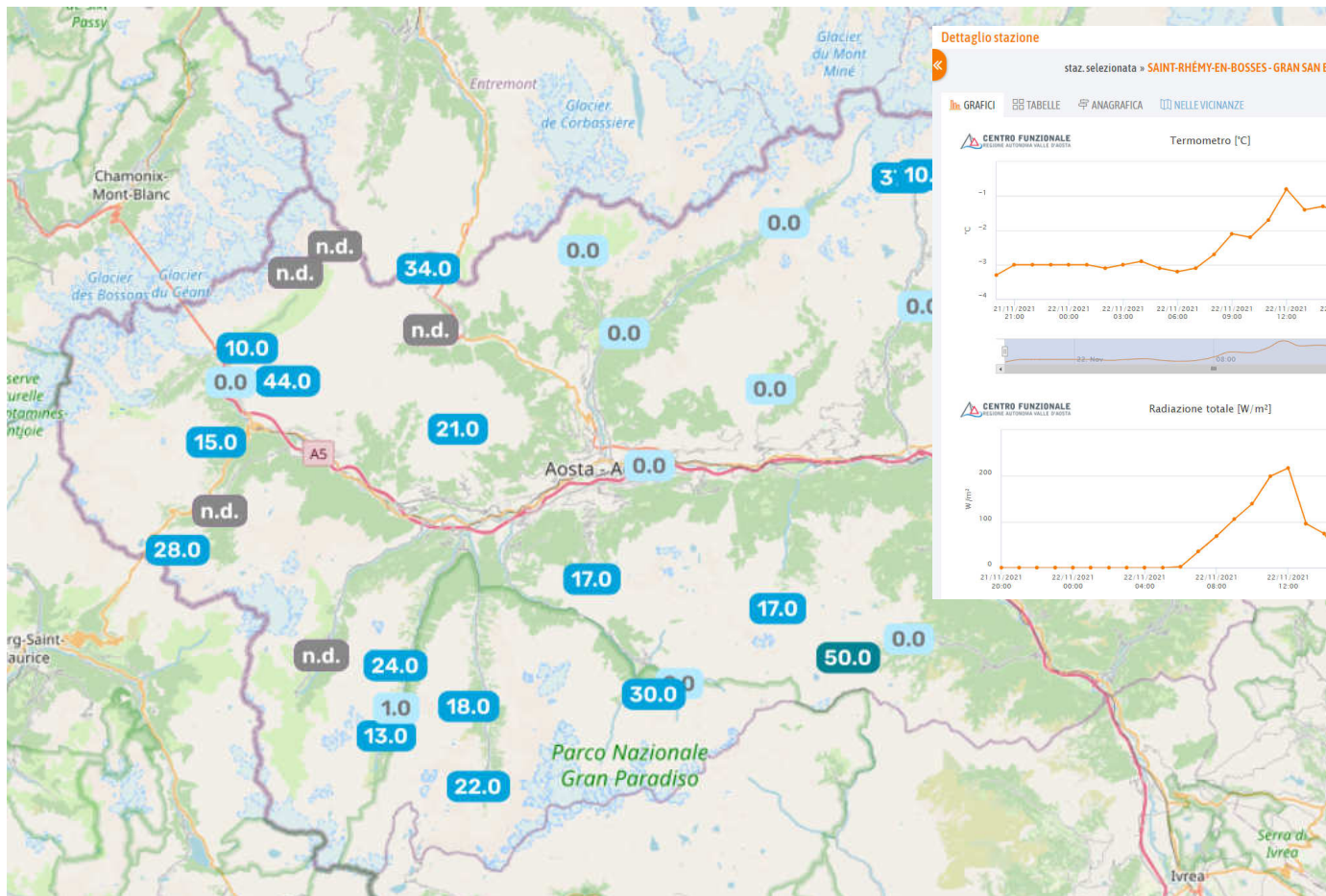
Neve



 **Neve** 

-  >> Altezza neve in tempo reale 
-  >> Altezza neve al suolo h8.00 
-  >> Neve fresca 1 giorno 
-  >> Neve fresca 3 giorni 
-  >> Tipo di neve in superficie 
-  >> Temperatura superficiale 
-  neve
- 

Altezza neve in tempo reale



Dettaglio stazione

staz. selezionata » SAINT-RHEMY-EN-BOSSES - GRAN SAN BERNARDO

SITO CENTRO FUNZIONALE

GRAFICI

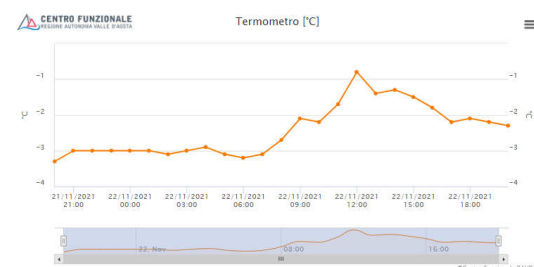
TABELLE

ANAGRAFICA

NELLE VICINANZE

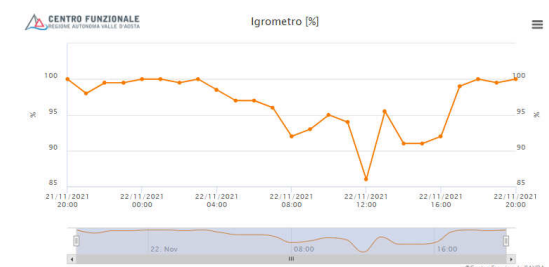
CENTRO FUNZIONALE

TERMINO ALTA VALLE D'AOSTA



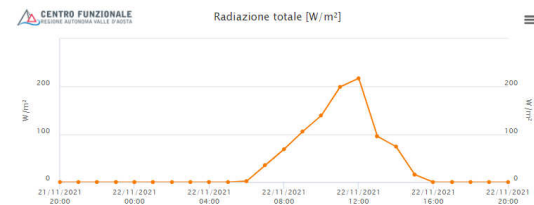
CENTRO FUNZIONALE

TERMINO ALTA VALLE D'AOSTA



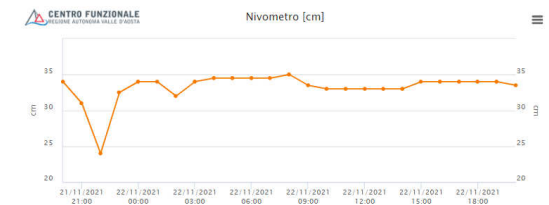
CENTRO FUNZIONALE

TERMINO ALTA VALLE D'AOSTA

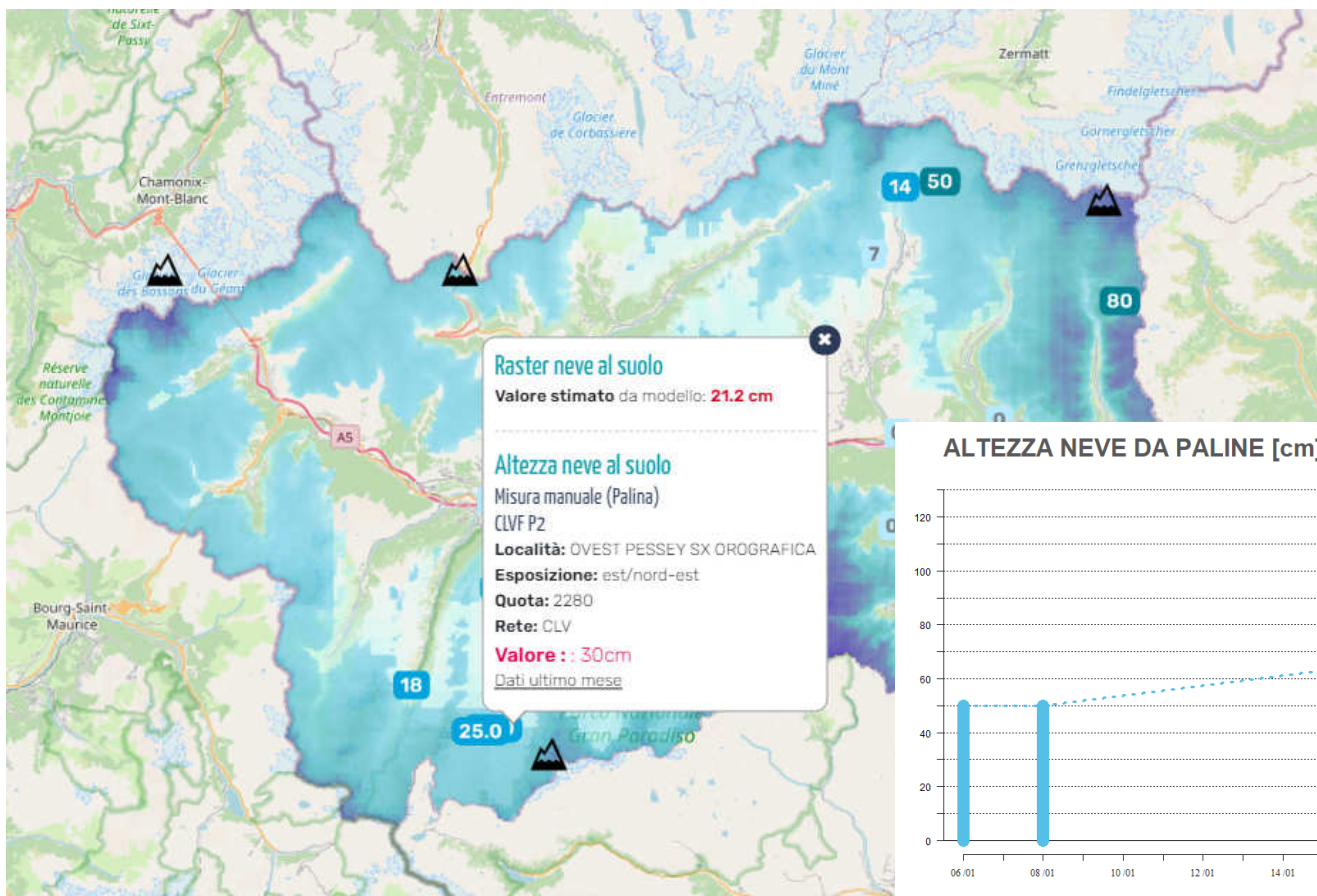


CENTRO FUNZIONALE

TERMINO ALTA VALLE D'AOSTA

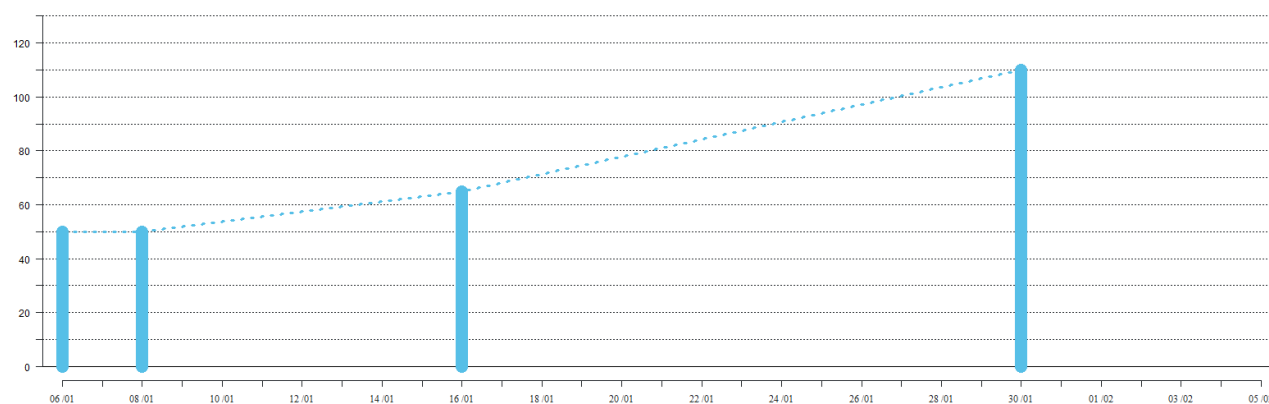


Altezza neve al suolo h8.00

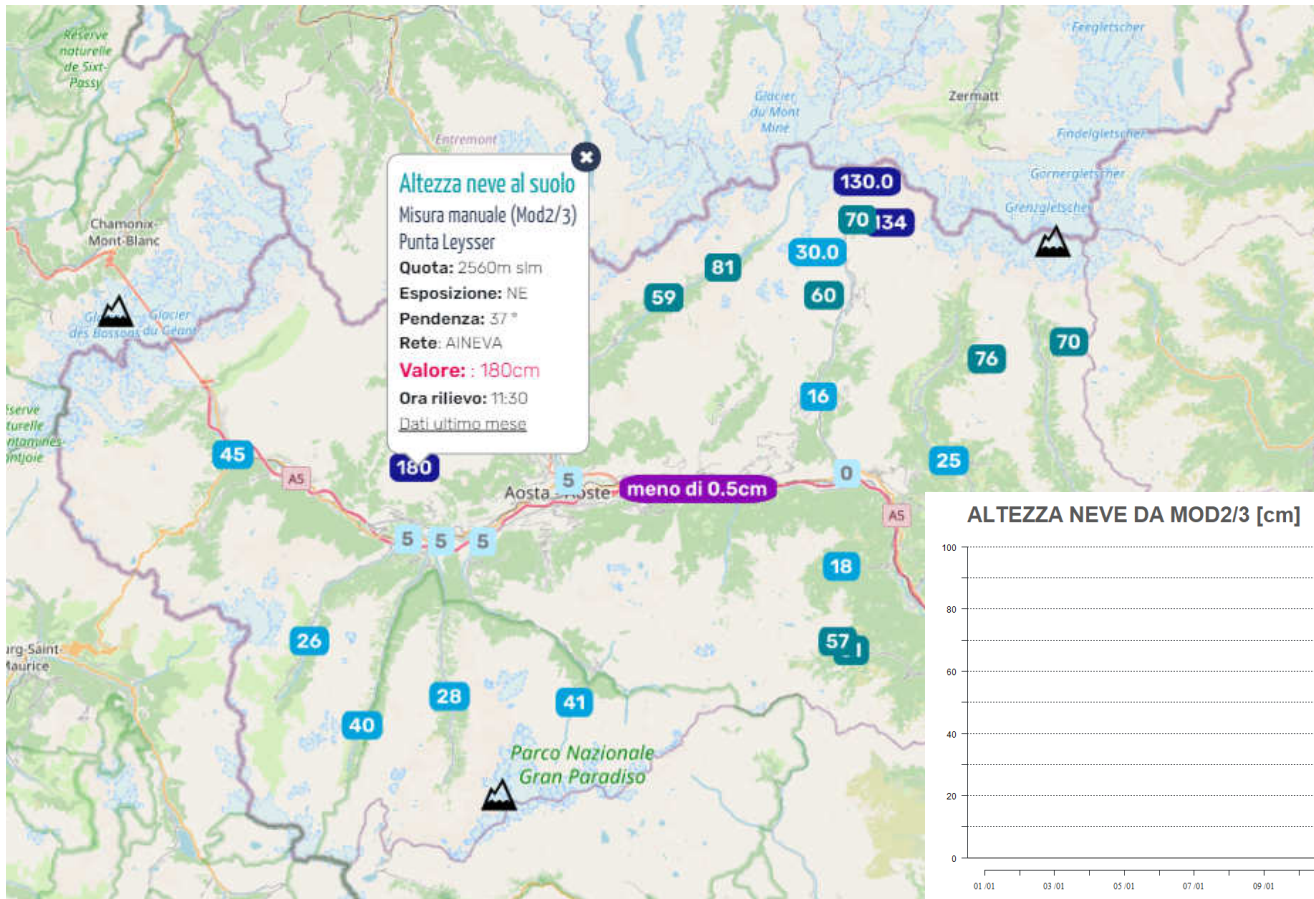


AWS
MOD1
MOD23
PALINE
DATI MASSICCI

ALTEZZA NEVE DA PALINE [cm]

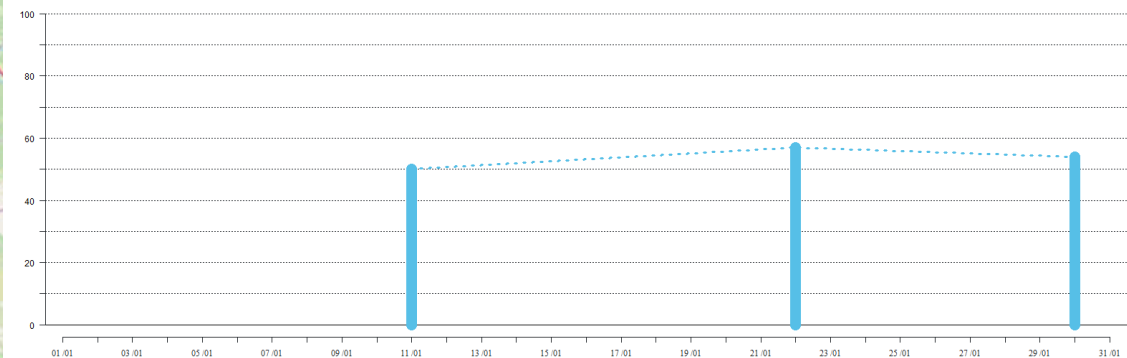


Altezza neve al suolo h8.00

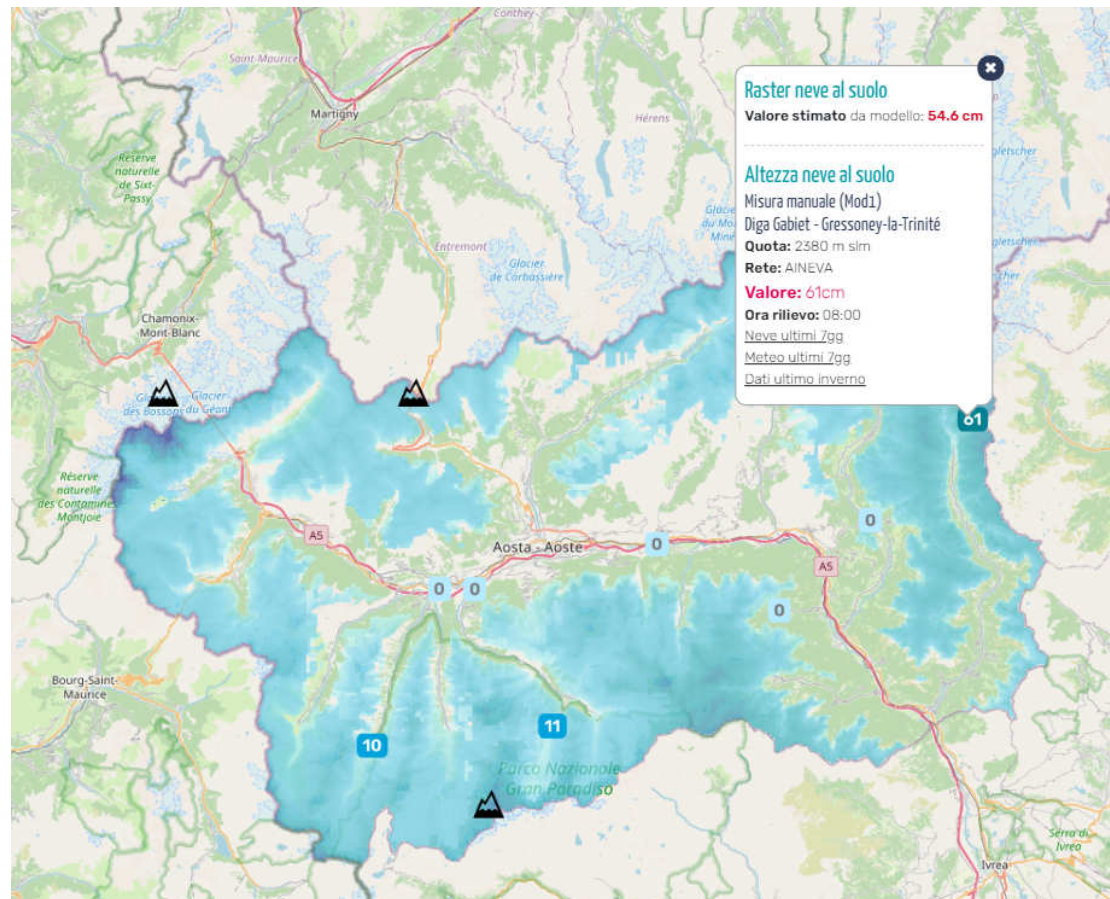


AWS
MOD1
MOD23
PALINE
DATI MASSICCI

ALTEZZA NEVE DA MOD2/3 [cm]



Modelli 1 – rilievi manuali



Modelli 1 – rilievi manuali



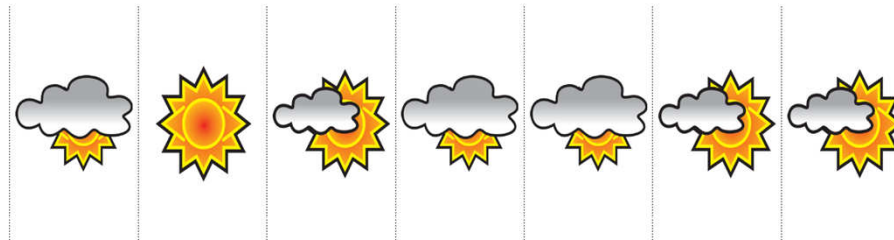
VDA Outdoor Gis

03VG - 1658 m s.l.m.

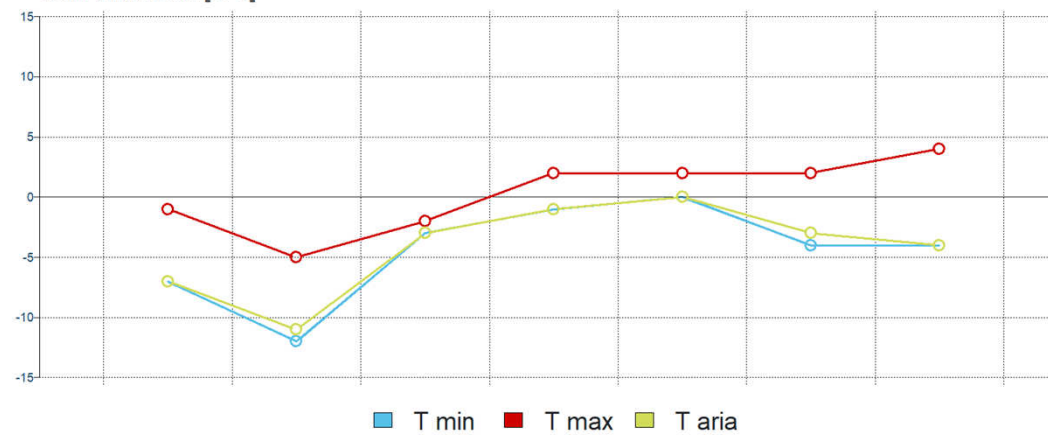


lun 25/01/21 | mar 26/01/21 | mer 27/01/21 | gio 28/01/21 | ven 29/01/21 | sab 30/01/21 | dom 31/01/21

NUVOLOSITA' DEL CIELO OSSERVATA AL MOMENTO DEL RILIEVO



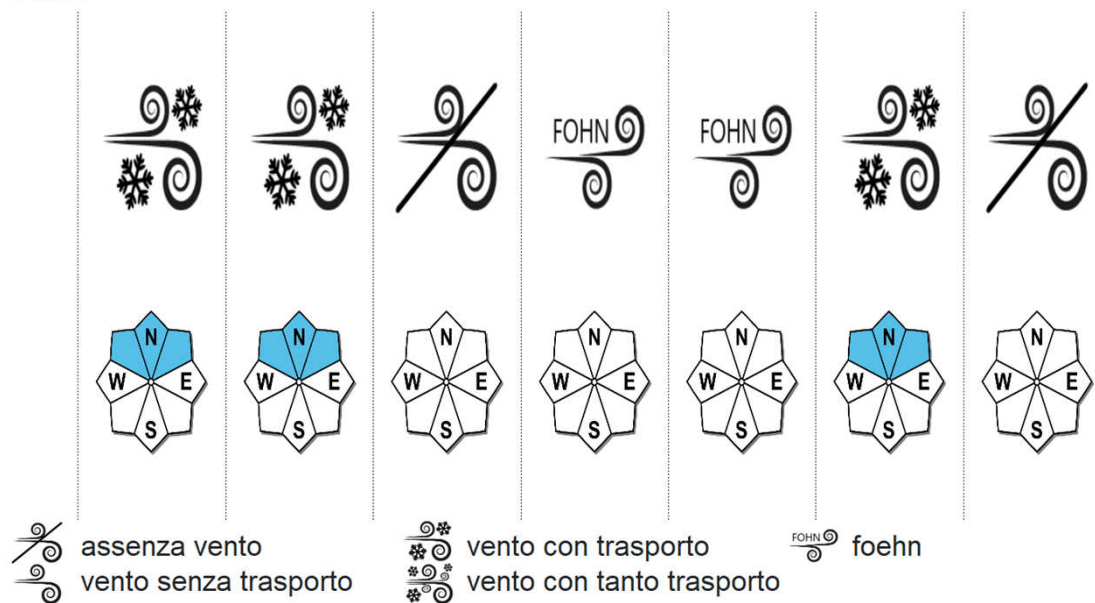
TEMPERATURA [°C]



Modelli 1 – rilievi manuali



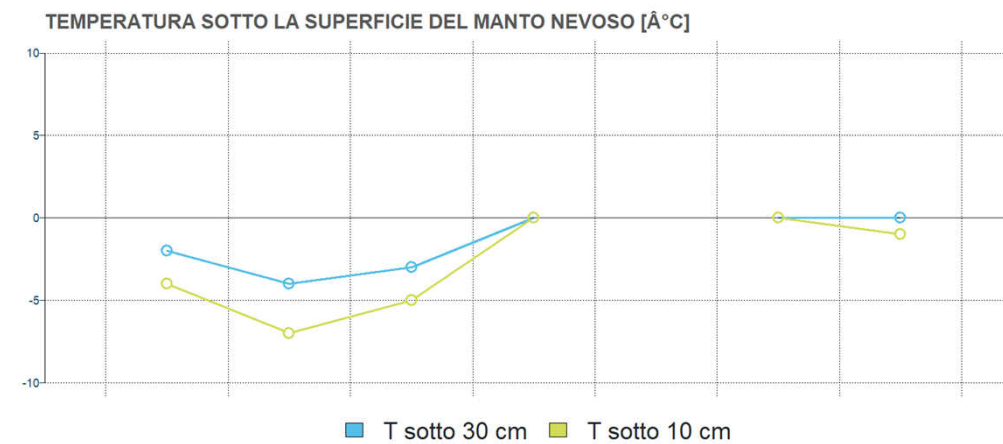
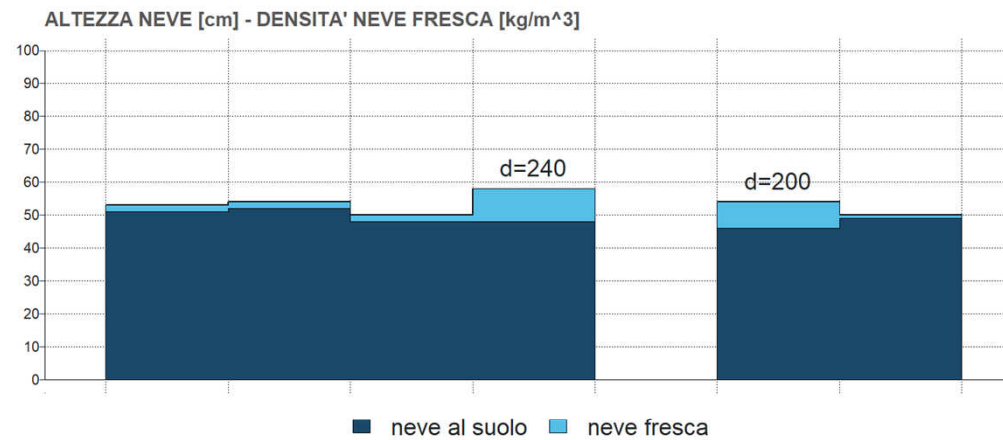
VENTO



Modelli 1 – rilievi manuali



lun 25/01/21 | mar 26/01/21 | mer 27/01/21 | gio 28/01/21 | ven 29/01/21 | sab 30/01/21 | dom 31/01/21



Modelli 1 – rilievi manuali



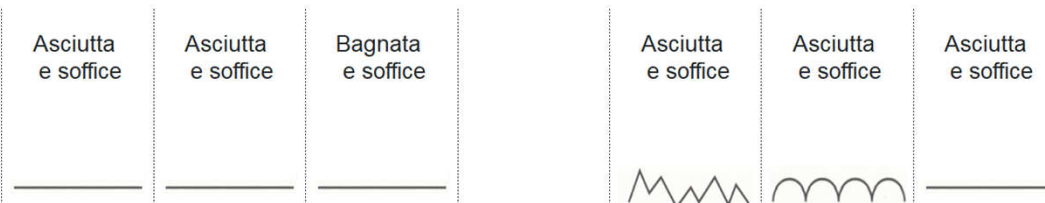
BRINA



ATTIVITA' VALANGHIVA



TIPOLOGIA E ASPETTO NEVE IN SUPERFICIE



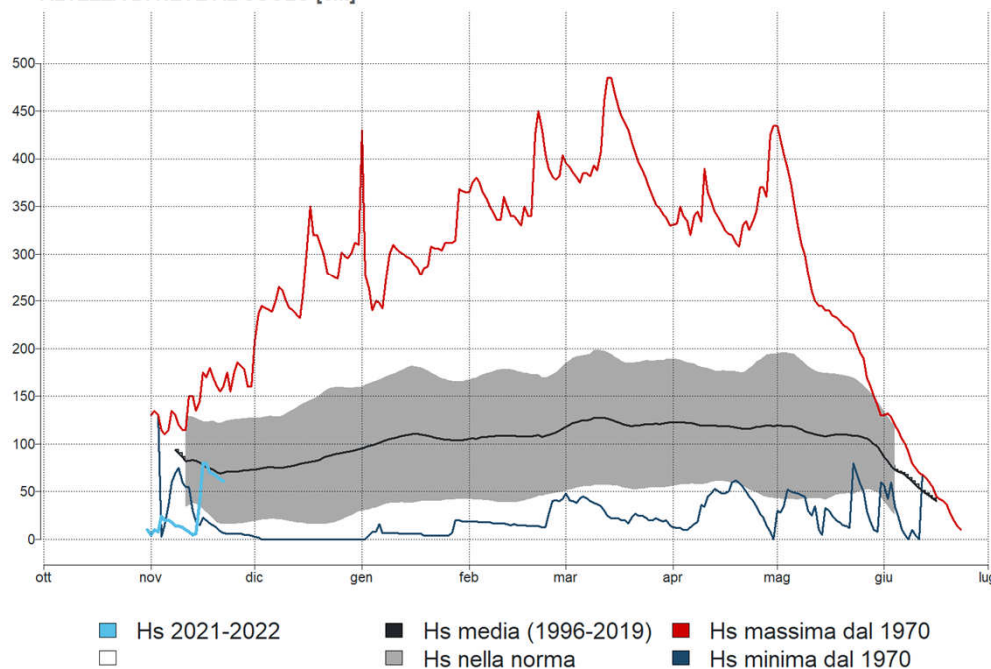
Modelli 1 – serie storiche



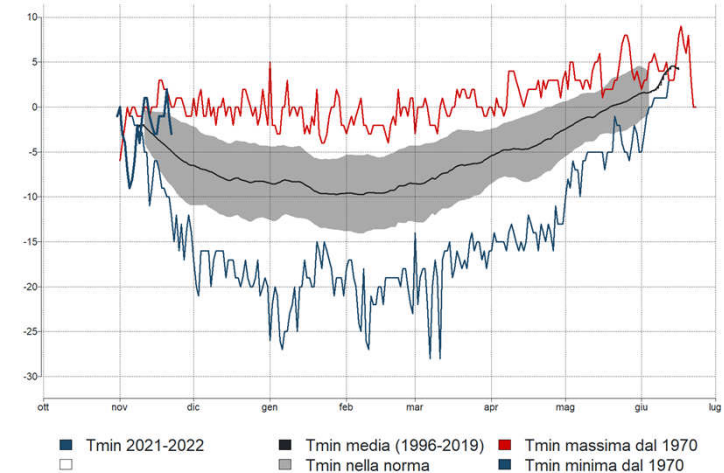
4GAB - 2380 m s.l.m. Gressoney-La-Trinité - Diga Gabiet



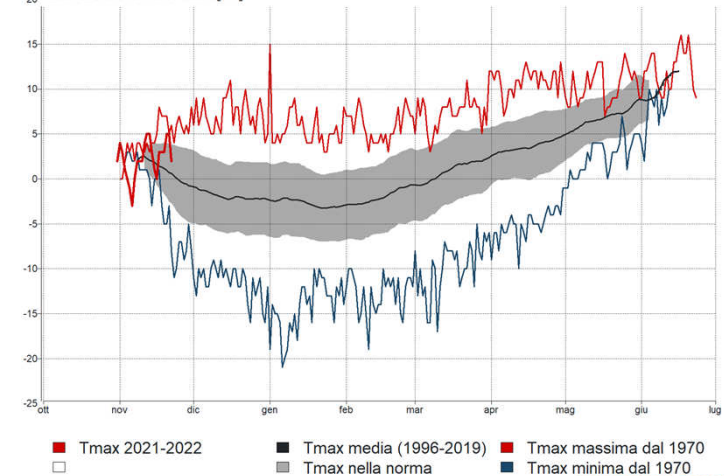
ALTEZZA DI NEVE AL SUOLO [cm]



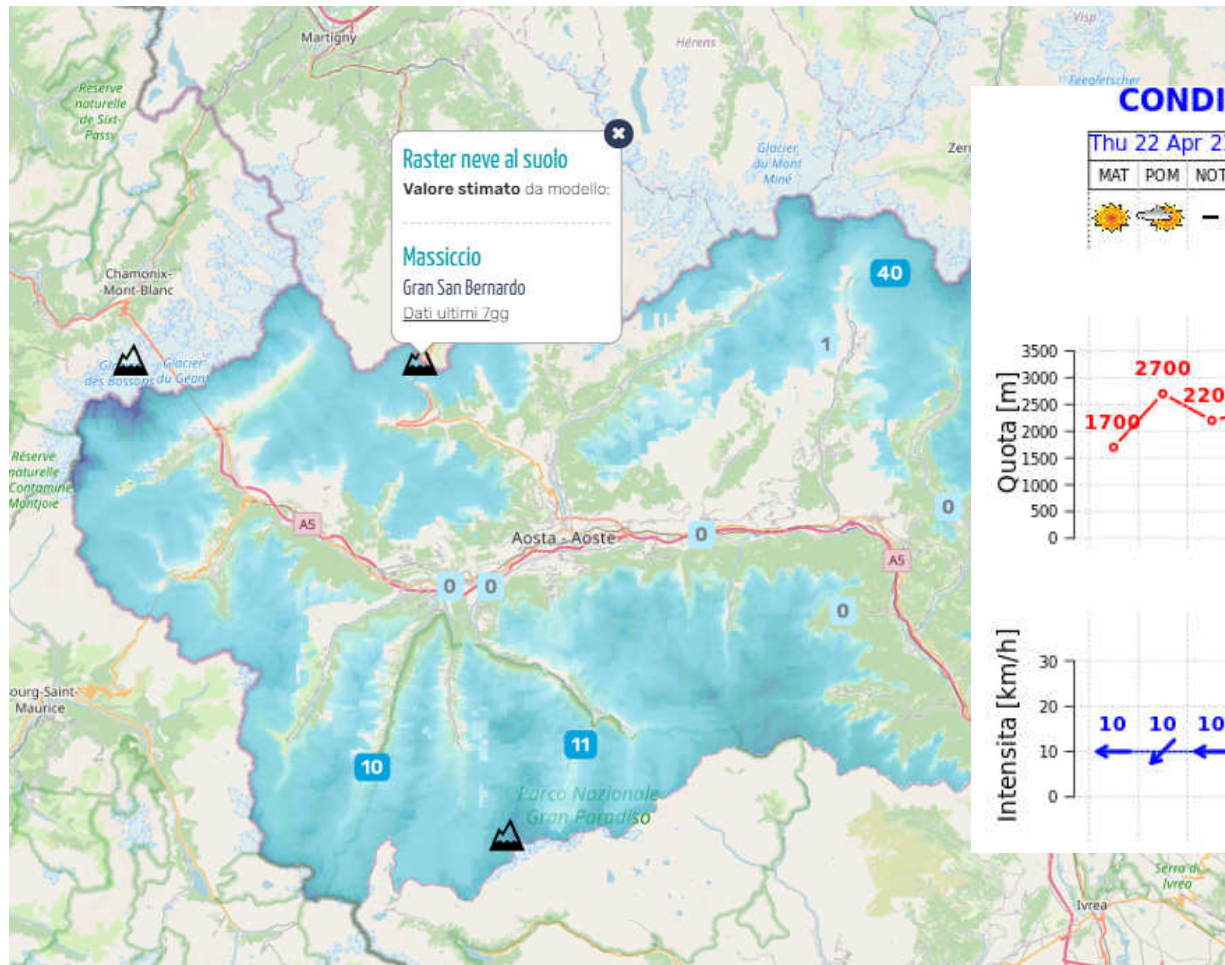
TEMPERATURA MINIMA [°C]



TEMPERATURA MASSIMA [°C]



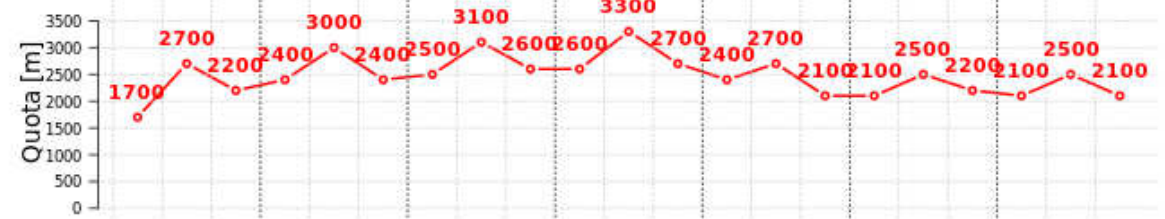
Massicci



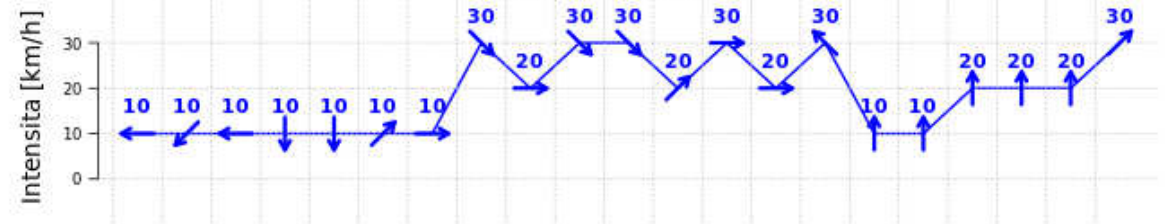
CONDIZIONI ULTIMI 7 GIORNI AREA GRAN SAN BERNARDO

Thu 22 Apr 21			Fri 23 Apr 21			Sat 24 Apr 21			Sun 25 Apr 21			Mon 26 Apr 21			Tue 27 Apr 21			Wed 28 Apr 21		
MAT	POM	NOT	MAT	POM	NOT	MAT	POM	NOT	MAT	POM	NOT	MAT	POM	NOT	MAT	POM	NOT	MAT	POM	NOT

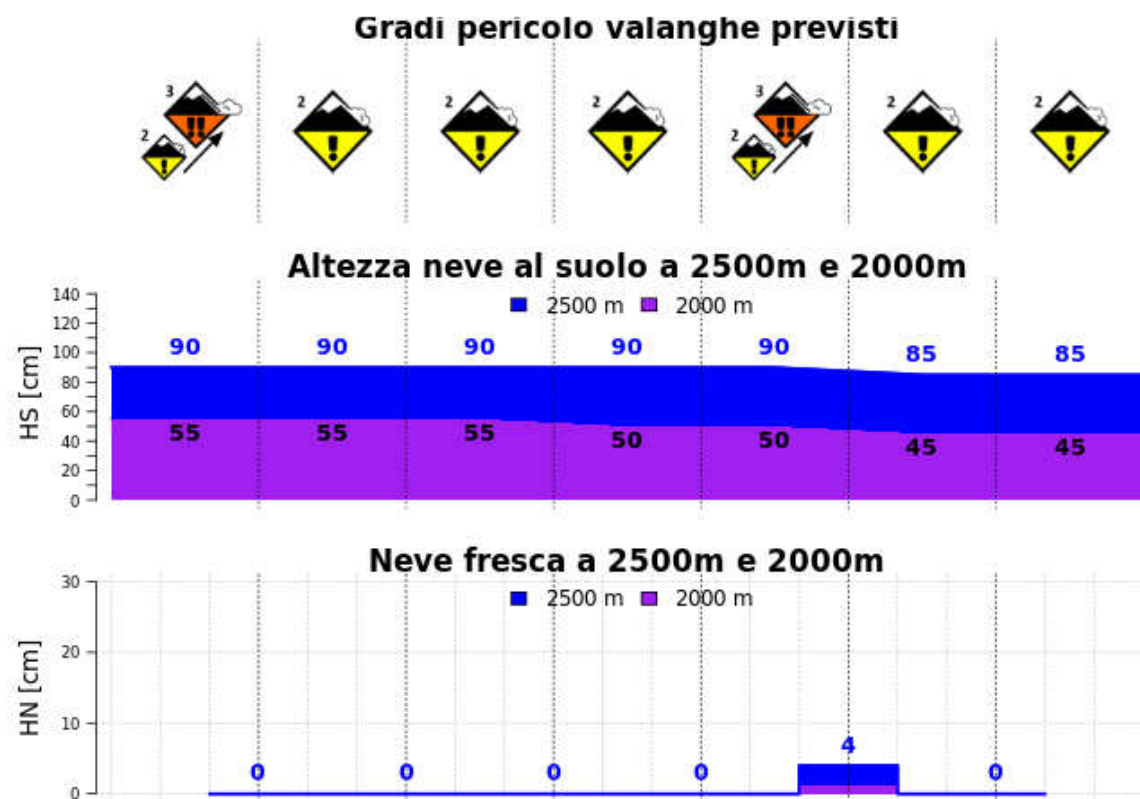
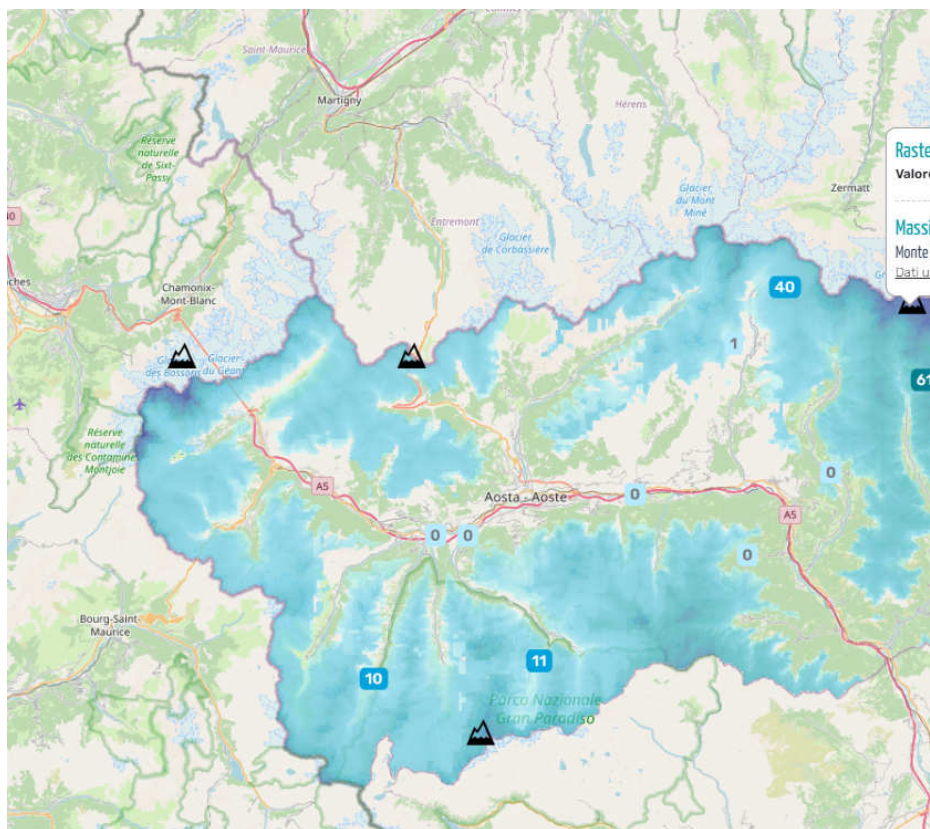
Zero termico



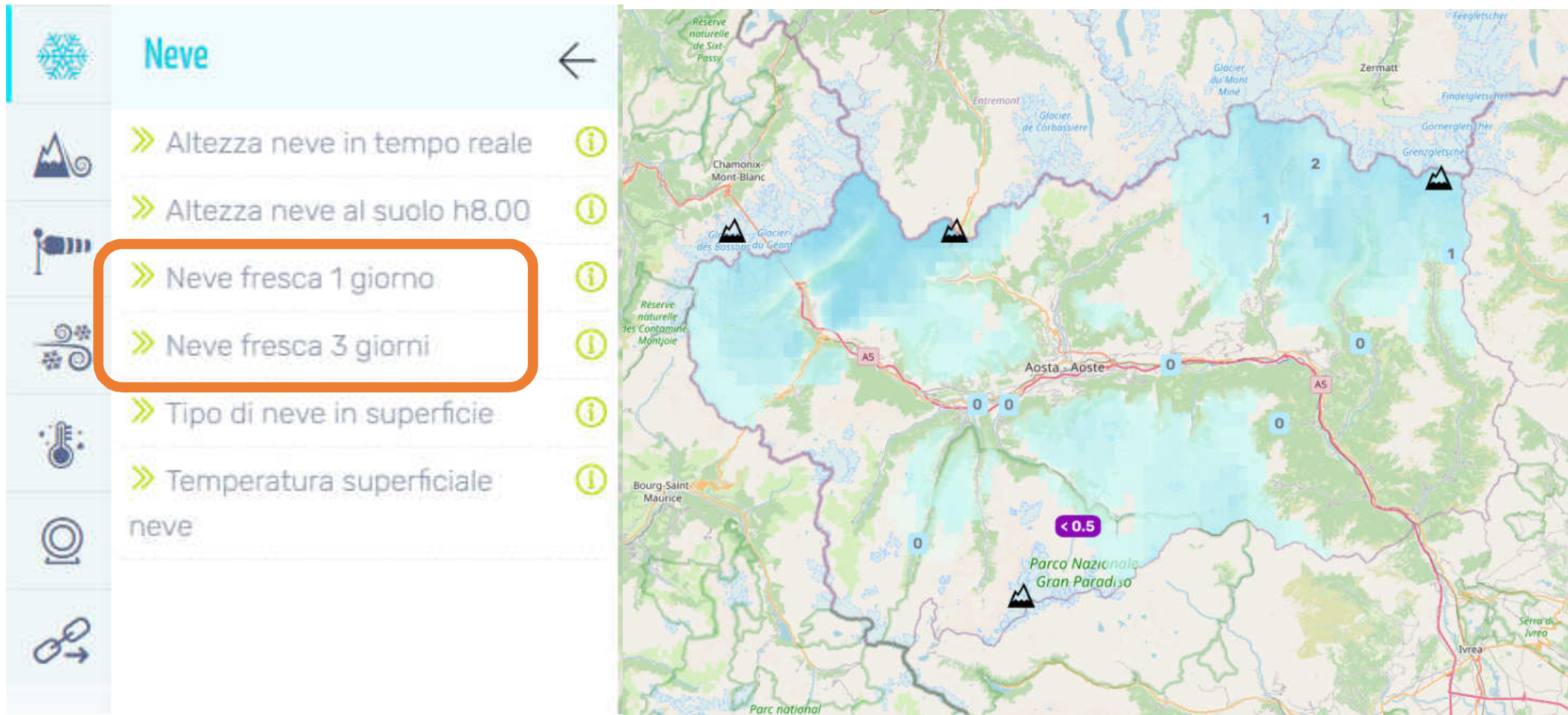
Vento a 3000m



Massicci



Neve fresca 1 giorno e 3 giorni



Tipo di neve in superficie



Neve

» Altezza neve in tempo reale

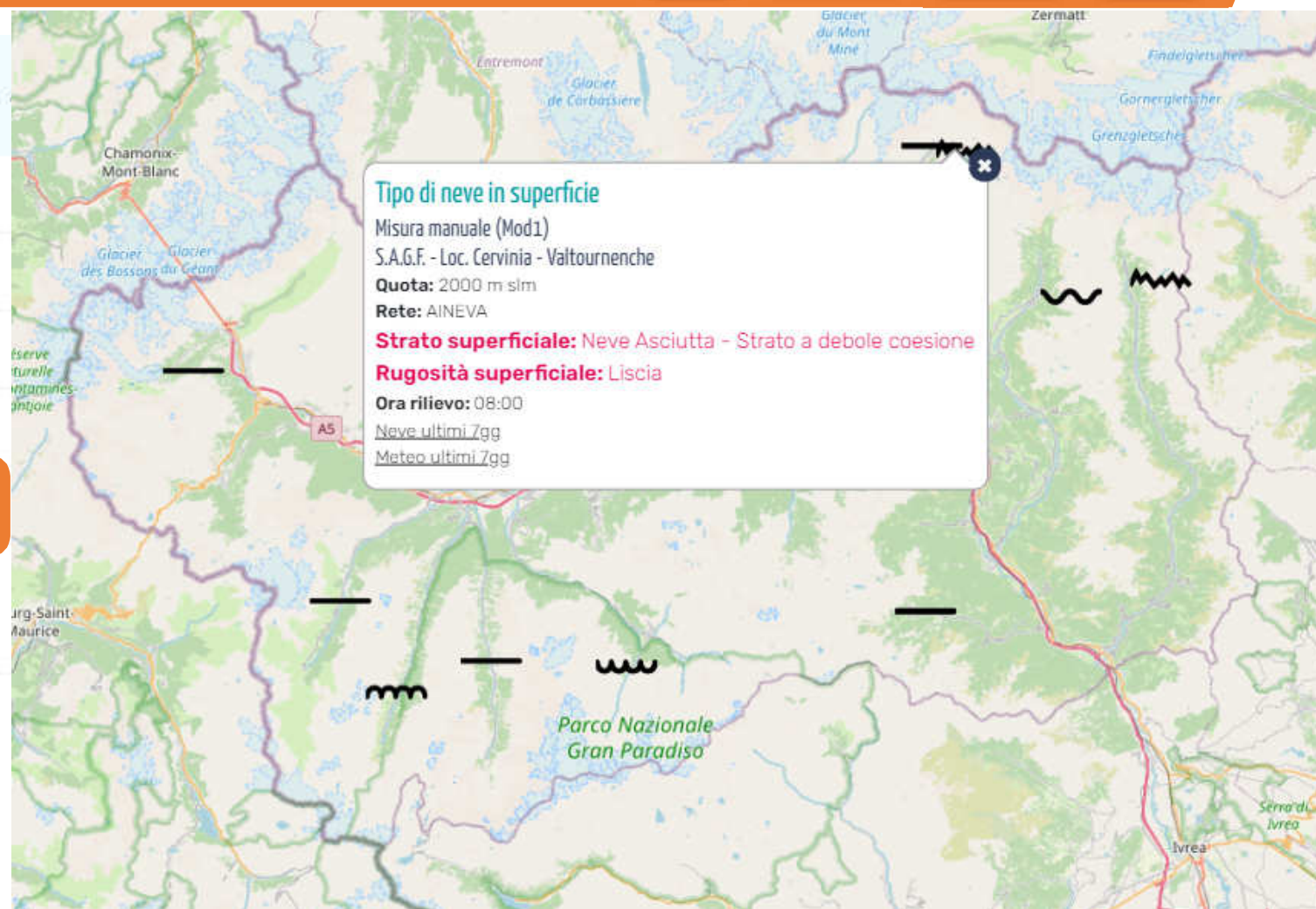
» Altezza neve al suolo h8.00

» Neve fresca 1 giorno

» Neve fresca 3 giorni

» Tipo di neve in superficie

» Temperatura superficiale neve

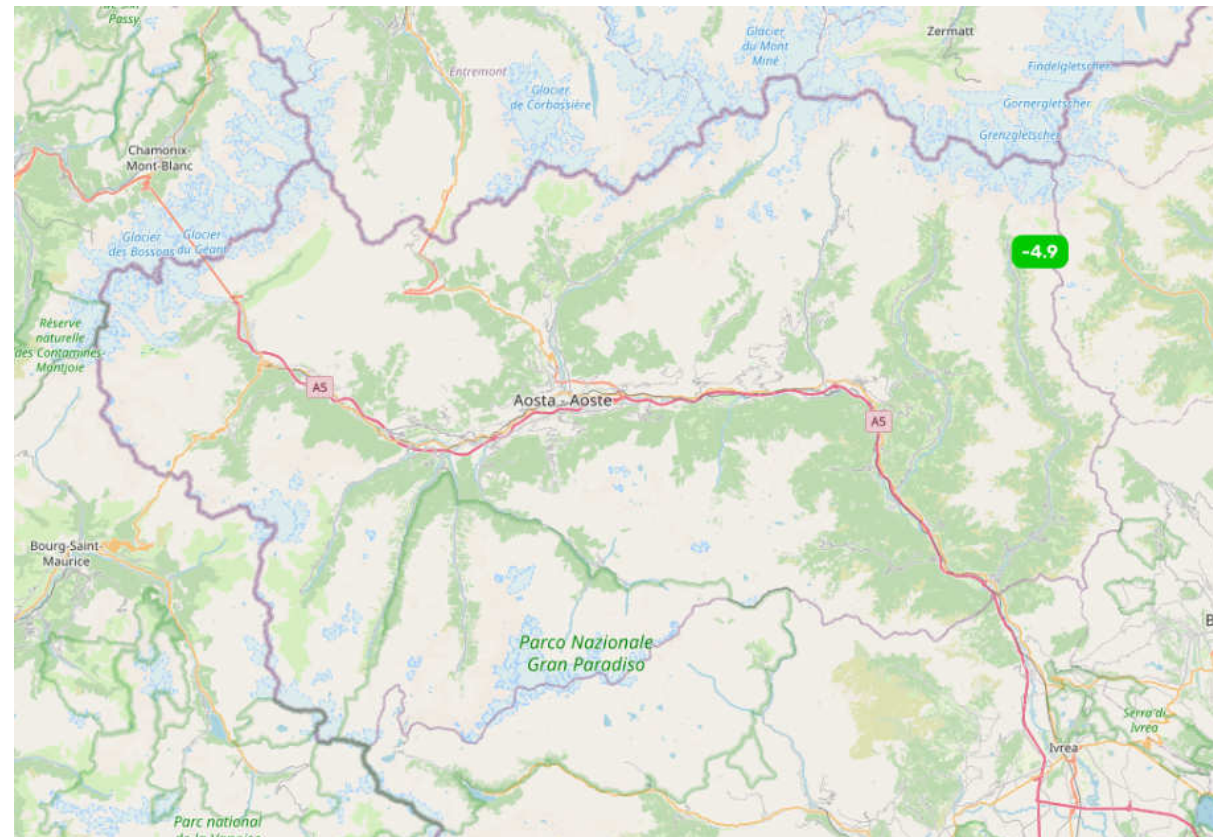


Temperatura superficiale neve



Neve ←

- » Altezza neve in tempo reale ⓘ
- » Altezza neve al suolo h8.00 ⓘ
- » Neve fresca 1 giorno ⓘ
- » Neve fresca 3 giorni ⓘ
- » Tipo di neve in superficie ⓘ
- » **Temperatura superficiale neve** ⓘ



Eventi valanghivi



The screenshot shows a mobile application interface with a light blue header containing the text "Eventi valanghivi" and a back arrow. Below the header is a navigation bar with a right-pointing arrow and the text "Valanghe scese ultimi 3 giorni" followed by an information icon. On the left side, there is a vertical menu of icons: a snowflake, a mountain peak, a search magnifying glass, a refresh icon, a thermometer, a location pin, and a pair of scissors.

The map displays a mountainous region with various glaciers labeled: Glacier de Cheilon, Glacier du Brenay, Glacier d'Arolla, Glacier d'Otemma, Glacier de Ferpêche, Eurawäletscher, and Glacier del Belvéd. A popup window titled "Valanghe scese ultimi 3g" provides details for an observation at Rifugio Aosta - Bionaz on 13-05-2021. The popup lists the following information:

- Osservazione da operatore (Mod1)**
- Rifugio Aosta - Bionaz**
- Valanga osservata il 13-05-2021**
- Numero e mole:** Molte valanghe spontanee di media grandezza
- Tipo:** Valanghe di neve a debole coesione di superficie
- Esposizione pendii:** Pendii esposti al sole
- Quota zona distacco:** Diverse altitudini
- Periodo distacco:** Durante l'intero arco diurno (tra le 07 e le 20)
- Provocate:** Nessuna valanga provocata

A second entry in the popup lists an observation from 11-05-2021:

- Valanga osservata il 11-05-2021**
- Numero e mole:** Piccole valanghe spontanee
- Tipo:** Valanghe di neve a debole coesione di superficie
- Esposizione pendii:** Pendii in tutte le esposizioni
- Quota zona distacco:** Diverse altitudini
- Periodo distacco:** Tra le 16 e le 20
- Provocate:** Nessuna valanga provocata

Eventi valanghivi



DIMENSIONE



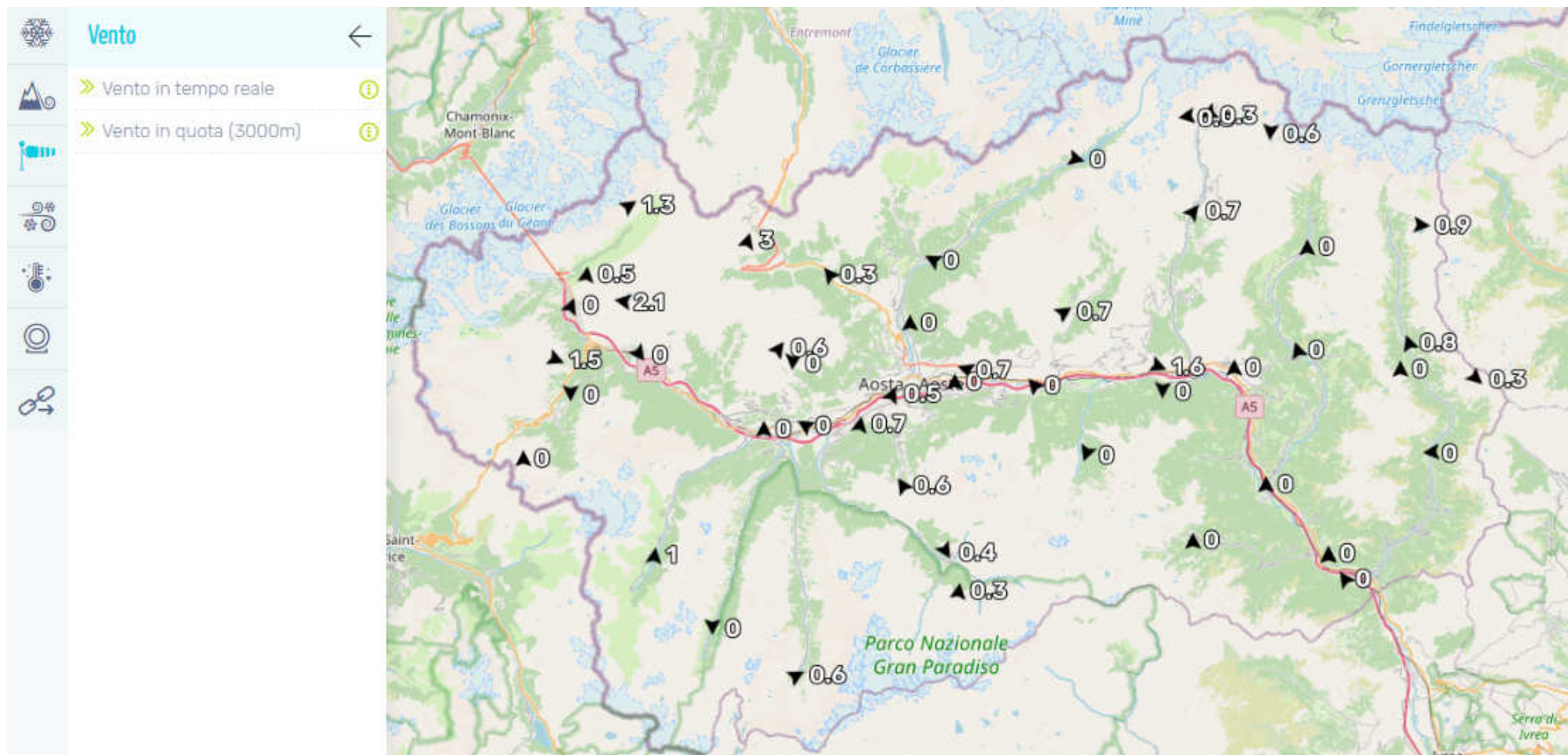
TIPOLOGIA



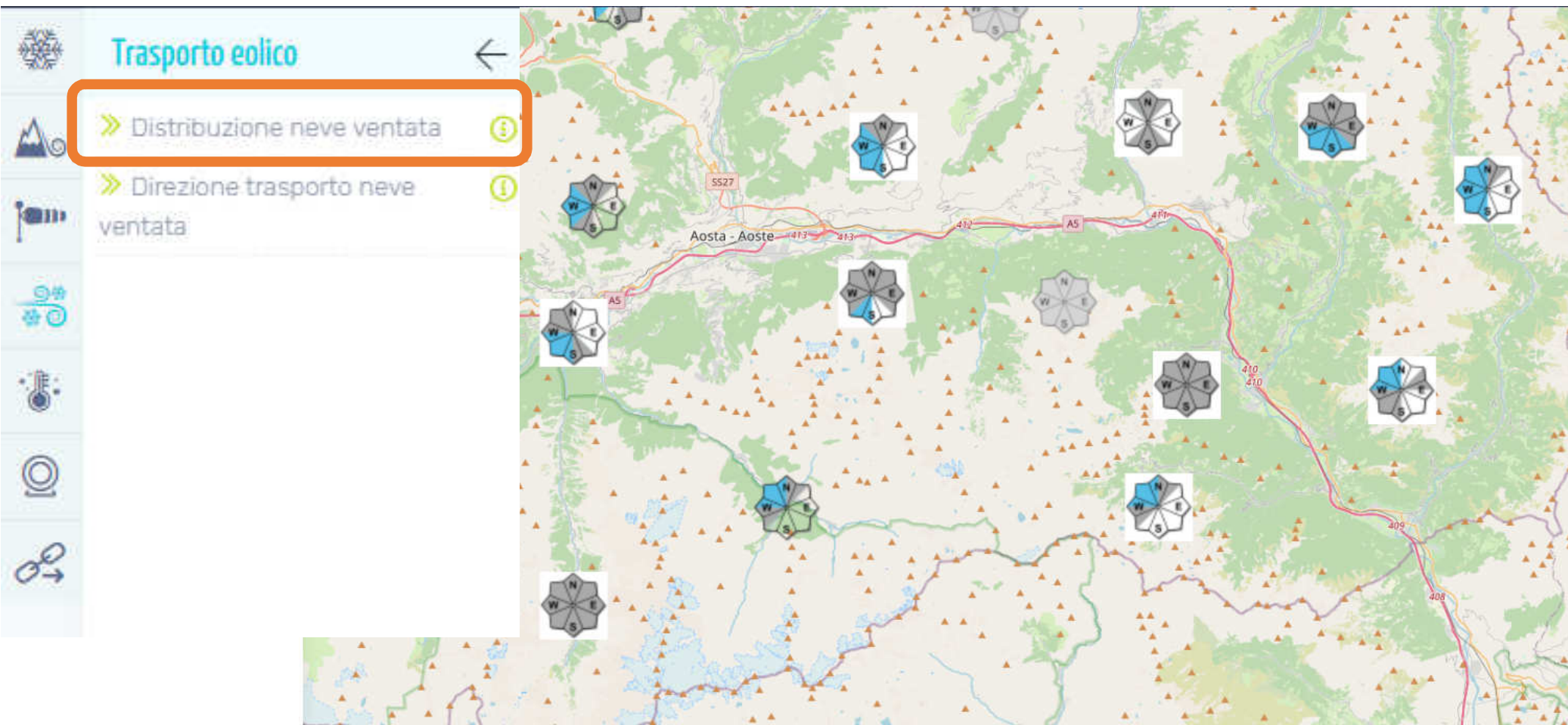
a lastroni

a debole
coesione

Vento




Trasporto eolico









Trasporto eolico

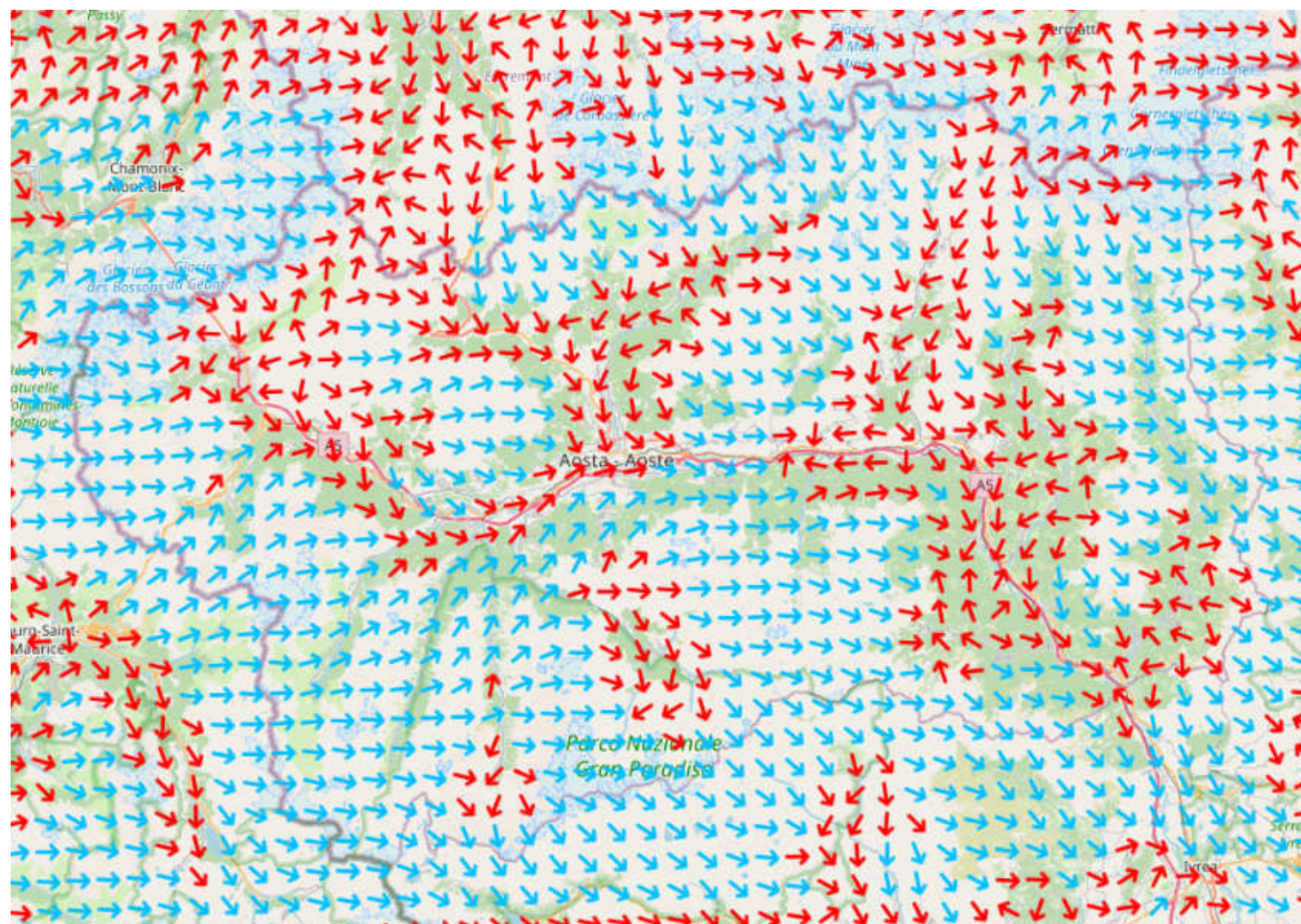


 **Trasporto eolico** ←

» Distribuzione neve ventata ⓘ

» Direzione trasporto neve ventata ⓘ

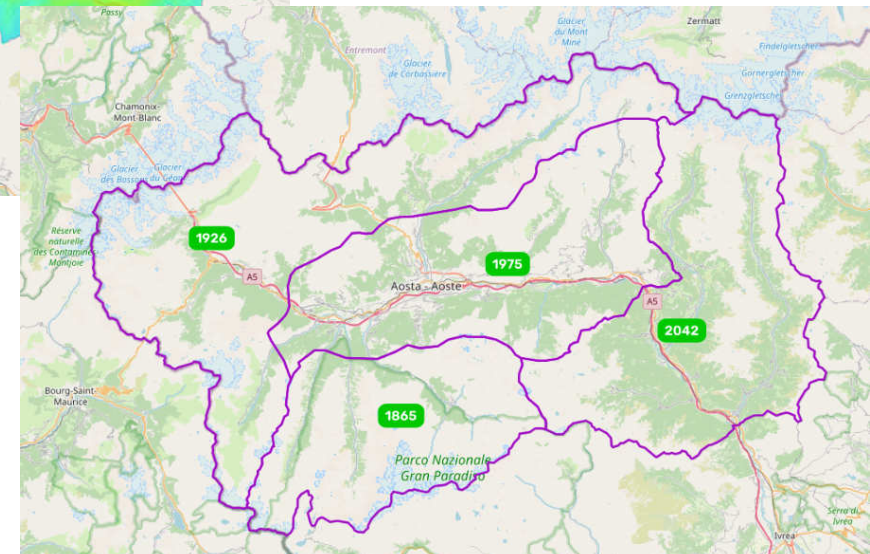
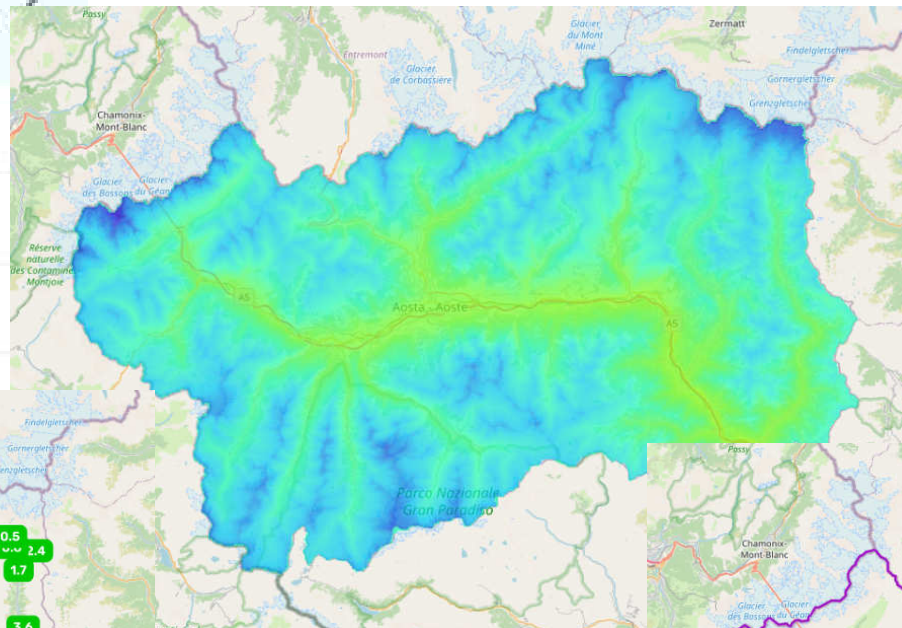


Temperatura



Temperatura

- » Temperatura in tempo reale
- » Temperatura oraria
- » Zero Termico

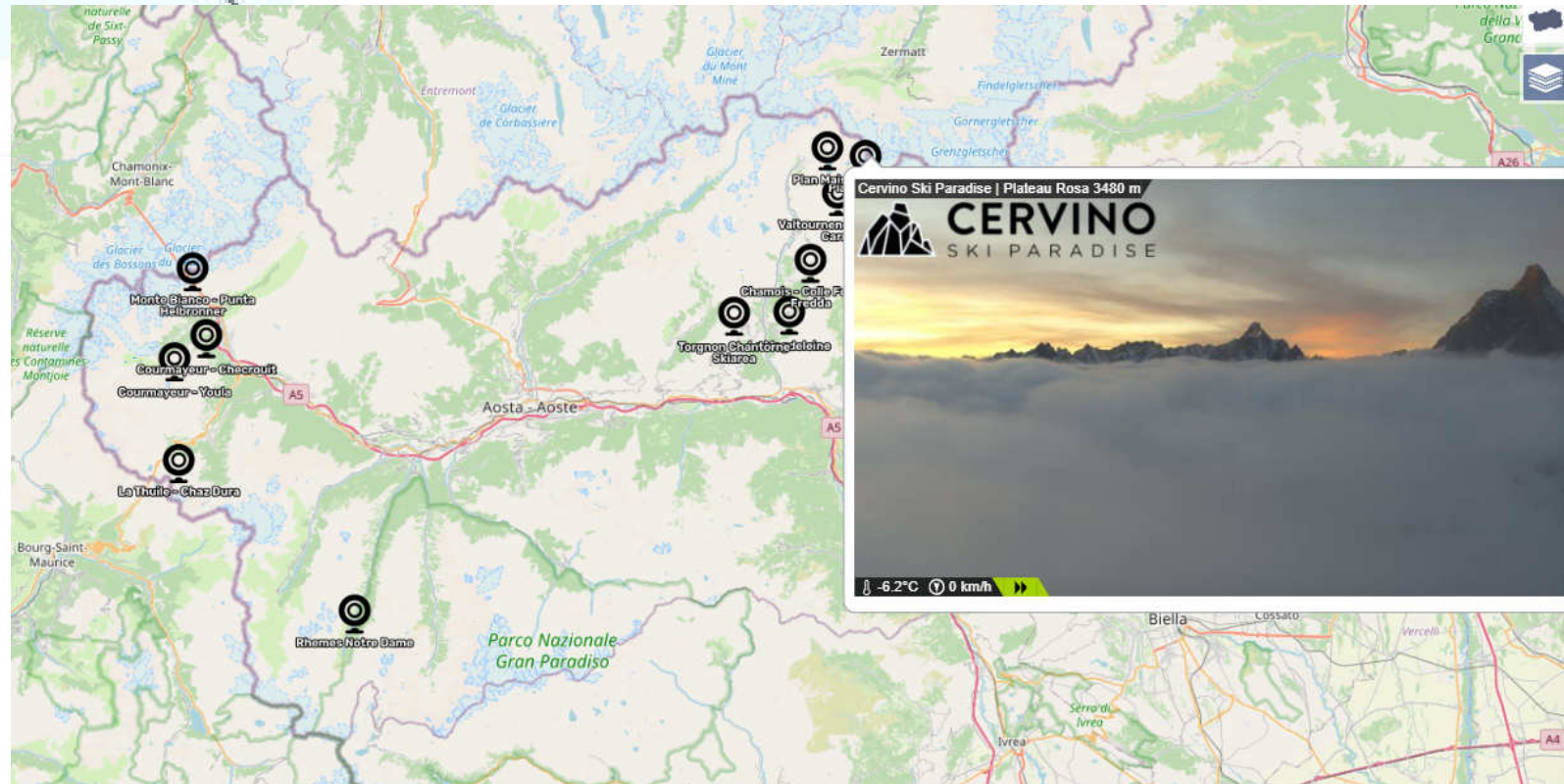


Webcams



Webcams

Panomax



Links utili



Links Utili



[Boil. neve e valanghe](#)



[Boil. meteo VDA](#)



[Boil. allerta VDA](#)



[Boil. valanghe Piemonte](#)



[Boil. valanghe Svizzera](#)

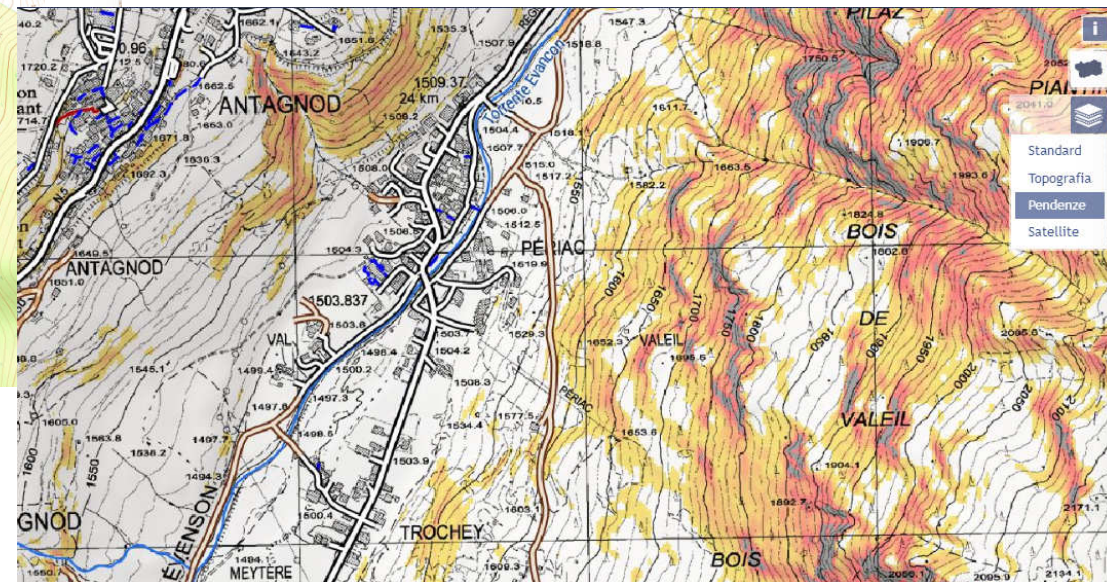


[Boil. valanghe Francia](#)

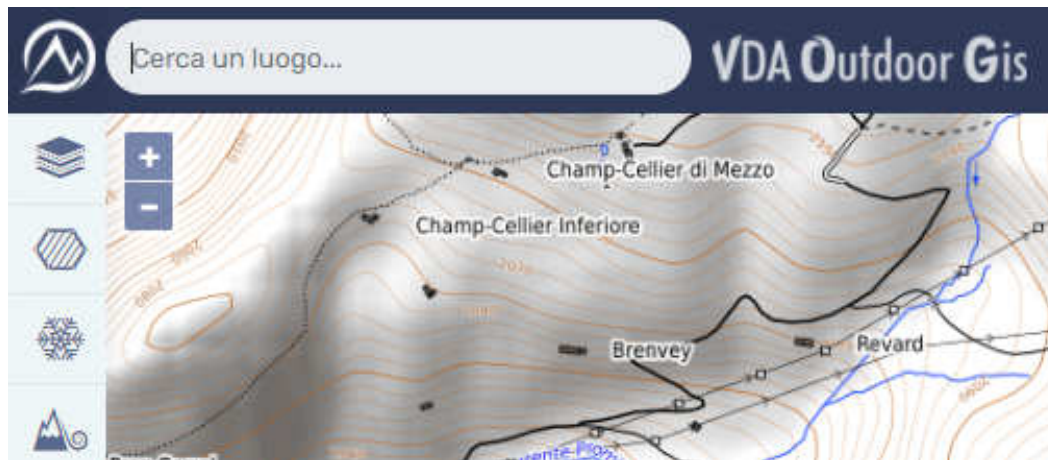


[Radar Meteo Suisse](#)

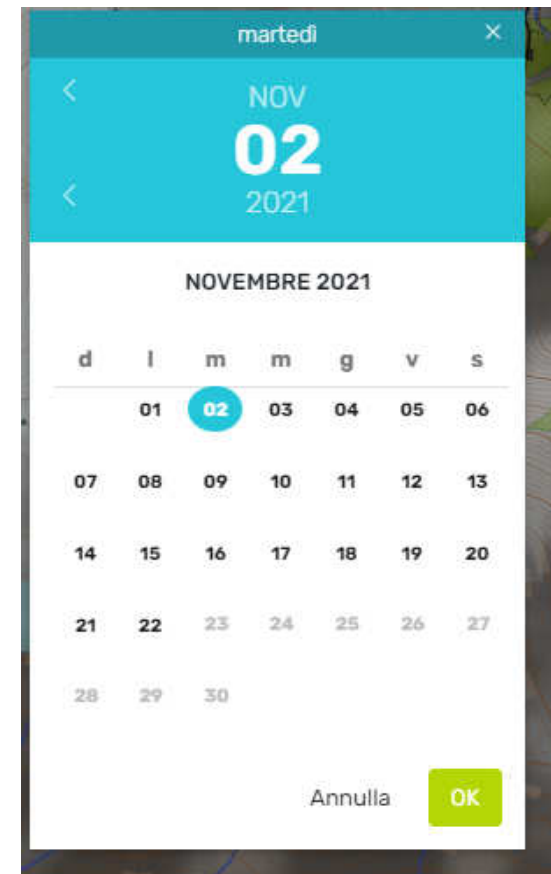
Cartografia di base



Utilità



RICERCA LOCALITA'



CALENDARIO / SLIDER



Conclusioni



Versione in fase di test

Suggerimenti e segnalazioni a u-valanghe@regione.vda.it